

Road Map



Hybrid Map



Terrain Map

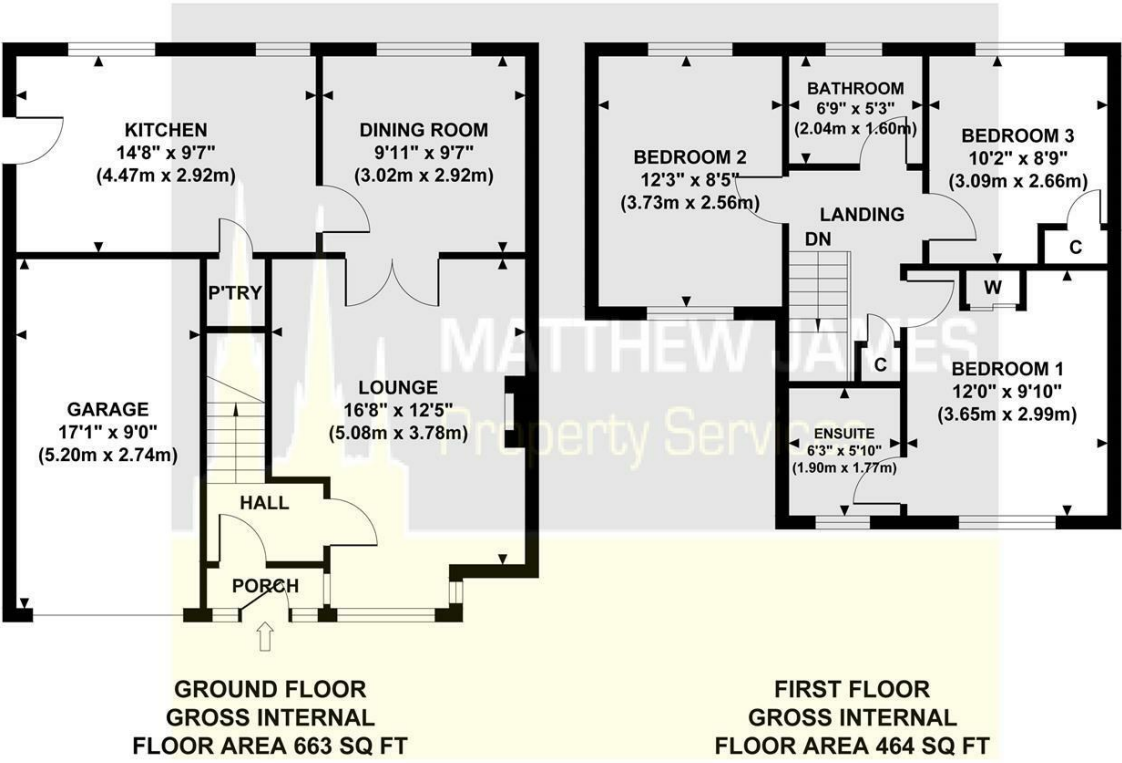


MATTHEW JAMES
Property Services

Floor Plan

8 FARLOW CLOSE

Approximate Gross Internal Area 1127 sq ft / 104.70 sq m



8 Farlow Close

Upper Stoke, Coventry CV6 7NN

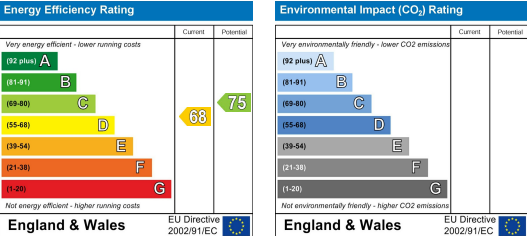
Offers Over £325,000



Viewing

Please contact us on 02477 170170 if you wish to arrange a viewing appointment for this property or require further information.

Energy Efficiency Graph



These particulars, whilst believed to be accurate are set out as a general outline only for guidance and do not constitute any part of an offer or contract. Intending purchasers should not rely on them as statements of representation of fact, but must satisfy themselves by inspection or otherwise as to their accuracy. No person in this firms employment has the authority to make or give any representation or warranty in respect of the property.

CONTACT INFORMATION

24a Warwick Row, Coventry CV1 1EY

02477 170170

info@matthewjames.uk.com

www.matthewjames.uk.com

Facebook

Twitter



8 Farlow Close

Upper Stoke, Coventry CV6 7NN

Offers Over £325,000



Approach / Driveway

Entrance Porch

Entrance Hallway

Lounge

16'8 x 12'5

Dining Room

9'11 x 9'7

Kitchen

14'8 x 9'7

First Floor Landing

Master Bedroom

12'0 x 9'10

Master En-Suite

6'3 x 5'10

Bedroom Two

12'3 x 8'5

Bedroom Three

10'2 x 8'9

Rear Garden

Family Bathroom

6'9 x 5'3

Garage

